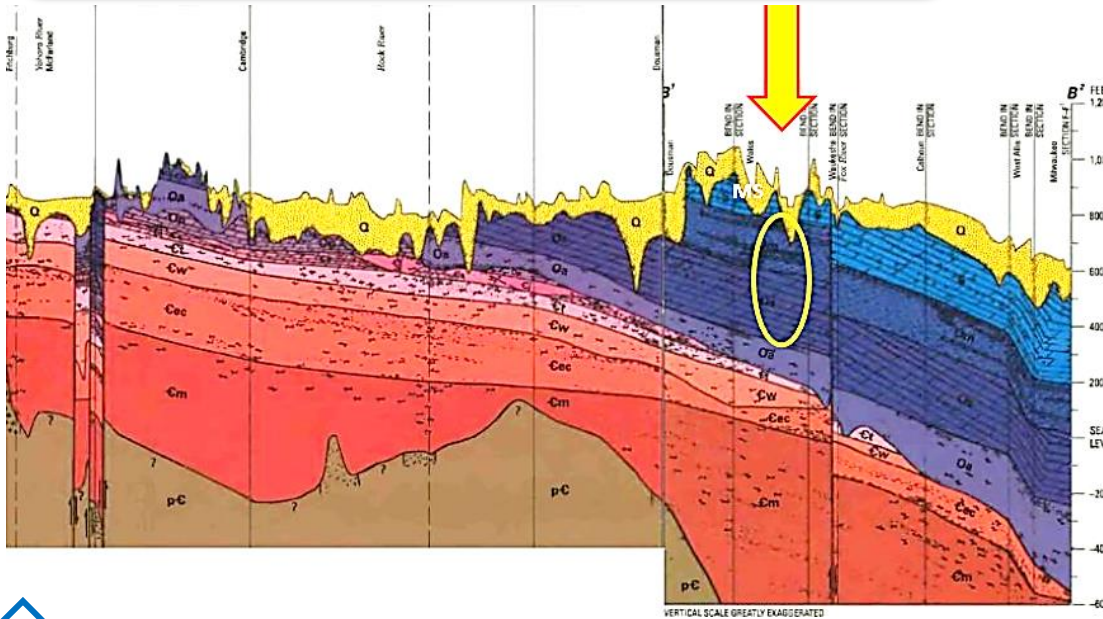


Parry Spring, 2020

A scanned, west-to-east image of a US Geological Survey physical transect map (images spliced from 2 separate transects – scale identical).



Lake Michigan lies on the far right. Note that the vertical scale has been exaggerated to show more detail.

Parry Spring water becomes pressurized in a confined aquifer beneath the Maquoketa Shale formation and issues forth from cracks. Highly permeable glacial surface deposits are shown in yellow. Exact depth of water origin cannot be pinpointed; however, 200 ft. is likely the minimum. Water chemistry here bears a classic signature of Sinnipee Group dolomite and also Silurian dolomite mineral classes, with which it *may* contact as it flows to the surface.

Results below!

S22W35206 Parry Rd.
Oconomowoc, WI 53066

Free, 24/7. Short wait times are common, especially on weekends

2020 Water Testing Results:

Indices / Parameters	This Spring	EPA & Common Safety Recommendations
pH	7.6	Between 6.5 - 8.5**
Total Dissolved Solids	445	500 mg/L**
Electrical Conductivity	0.74	5 - 50 μ s/cm ¥
Cations / Anions	8.0 / 7.8	N/A
Sodium, Na	16	30 - 60 mg/L \ddagger
Potassium, K	1	N/A
Calcium, Ca	82	N/A
Magnesium, Mg	38	125 mg/L \ddagger
Total Hardness, CaCO ₃	363	N/A
Nitrate, NO ₃ -N	5.9	10 mg/L*
Sulfate, SO ₄ -S	8	250 mg/L**
Chloride, Cl	40	250 mg/L*
Carbonate, CO ₃	<1.0	N/A
Bicarbonate, HCO ₃	351	N/A
Total Alkalinity, CaCO ₃	289	N/A
Fluoride, F	0.05	4 mg/L*
Total Iron, Fe	<0.01	>0.3 mg/L**

Thresholds for deleterious impact listed above.

Property of SpringWaterTest

This spring water has great taste and supplies beneficial minerals such as Magnesium (8 in 10 Americans are Mg deficient), for those choosing the location. Although it falls within safety parameters, this water contains slightly elevated levels of **Nitrate**, likely a result of local agricultural activities. This was a surprise, and is something that SpringWaterTest will continue to monitor closely for our community. Since 2019, nitrate has gone down by 1.8 mg/L which is good to see.



* EPA Primary Drinking Water Standard
 ** EPA Secondary Drinking Water Standards
 \ddagger Adverse effects to taste possible
 N/A = no official stance taken, generally not considered a threat
 ¥ "Typical" drinking water

S22W35206 Parry Rd., Oconomowoc, WI 53066

Free, 24/7. Short wait times are common, especially on weekends